



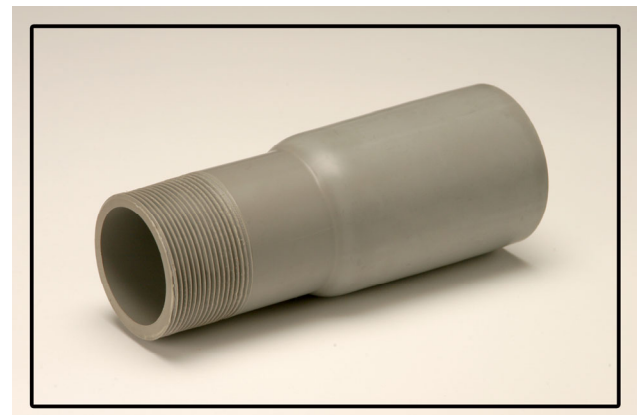
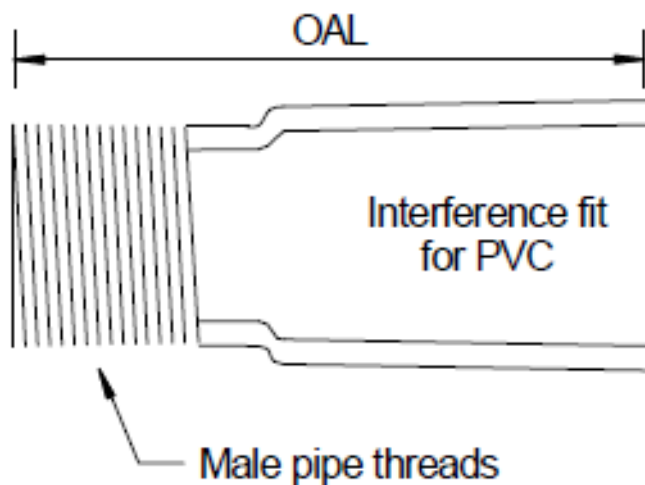
Tacoma Facility

1427 E 26th Street
Tacoma, WA 98421
(253) 272-7788

Quincy Facility

1302 NE Intermodal Way
Quincy, WA 98848
(509) 497-0350

**EXTENDED TA
(TERMINAL ADAPTER)**



Pipe Size (inches)	Overall Length OAL (avg)	Thread Length (in)	Bell Depth (in)	Weight (lbs)
2	6.5	1.125	3.5	0.620
3	7.0	1.5	4.0	1.345
4	7.5	1.625	4.5	2.052

All dimensions are inches

Other sizes available upon request

Advantages & Highlights of Extended TAs:

- Manufactured from Schedule 80 pipe conforming to UL 651 and NEMA TC-2 *Electrical Polyvinyl Chloride (PVC) Conduit*
- Compression formed interference fit conforms to UL651 and NEMA TC-3 *Polyvinyl Chloride (PVC) Fittings for Use with Rigid PVC Conduit and Tubing*
- Couplings are intended to be joined with a cement that is or contains a solvent for polyvinyl chloride
- Threads are made to NPT (National Pipe Tapered)
 - 2" = 11.5 threads per inch
 - 3" & 4" = 8 threads per inch
 - Taper is 3/4" per foot (approx. 3.5°)
- Dimensions are approximate and subject to normal manufacturing tolerances